



Rooting in **Quality**, Blooming in **Design**



ABOUT US

Dragon Quartz is a new brand name under Nhat Huy Stone Fabrication, which is a member of Nhat Huy Group - one of the leading manufacturers and exporters of Quartz slabs and fabrications in Vietnam. Our factory is located in Tho Loc Industrial Park, Nghe An, Vietnam and covers an area of 50,000 square meters for production, with over 200 experienced and skillful workers.

We operate two workshops - a slab workshop that has two production lines and can produce 60 containers of slabs per month, and a fabrication workshop that specializes in quartz cut-to-size products, with a monthly output of 30-35 containers. All of our products are made in Vietnam and certified as Vietnam Origin by the Vietnam Chamber of Commerce and Industry.

We supply our products to construction wholesalers, retailers, and builders/contractors for hospitality and multi-family projects. Our factory uses cutting-edge technology in fabrication processes to create perfectly-fitted and edged vanity tops, countertops, and tabletops.





R&D

Our team of dedicated designers is committed to creating exceptional products that cater to the ever-changing tastes and preferences of our valuable customers. We employ the latest technologies to explore new designs and bring them to mass production, so you can enjoy products that are not only appealing but also innovative.



CALACATTA

COLLECTION

Affordable high-end looks and life-long durability come together in Calacatta colors. With polished finish for a tinge of elegance that reflects more light for your surface.



Buckwheat Flower - NH937W





Reed Flower - NH965W



Buckwheat Flower - NH937W



Cold Spring - NH938W



Golden Valley - NH942W



Reed Flower - NH965W

COLLECTION

FLOWER FOREST

Experience the magic of spring in Vietnam's highlands with our collection, creating poetic and pristine scenes named "Flowers Forest" From the initial bloom of buckwheat flowers to the blanket of blossoms on mountains and hills, it concludes with a sunshine view of the flower-filled valley. The collection includes NH937 Buckwheat Flower, NH938 Cold Spring, and NH942 Golden Valley and a special design inspired by the beauty of the reed flower, creatively stylized on the slab NH965: Reed Flower.



Buckwheat Flower - NH937W



Cold Spring - NH938W





Golden Valley - NH942W



Reed Flower - NH965W





Perito Moreno - NH934W



Perito Moreno - NH934W



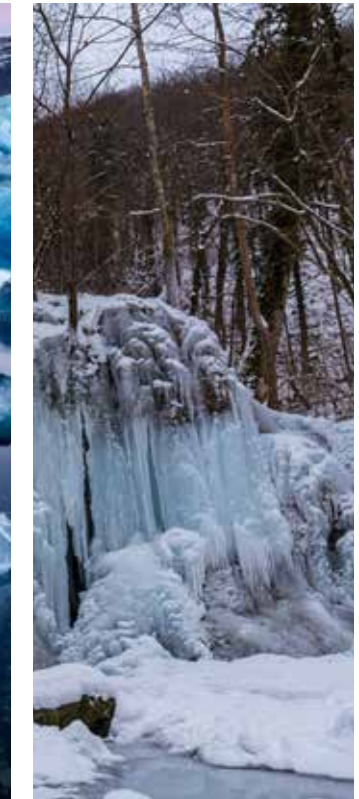
Ammil - NH901W



Calacatta Baikar - NH954W



Diamond Beach - NH936W



Frozen Fall - NH947W

COLLECTION

GLACIER QUARTZ

This collection draws inspiration from winter's enchanting, featuring the ethereal touch of snow dust and frost, along with the allure of romantic frozen rivers. Beginning with the invigorating ambiance of dusty snow on tree branches, highlighting the pristine beauty (Calacatta Ammil); to Perito Moreno (NH934), one of the world's iconic glaciers. The collection expands, marveling at the "Diamond Beach (NH936)" where countless icebergs stand like towering monuments on obsidian sand, radiating brilliance akin to diamonds; and then venturing to the surreal beauty of ice waves beneath Russia's Lake Baikal (NH954). Finally, enjoy the majestic frozen waterfall (NH947 Frozen Fall), a captivating blend of intense vitality beneath its serene, motionless beauty.



Perito Moreno - NH934W



Ammil - NH901W





Calacatta Baikal - NH954W



Diamond Beach - NH936W





Frozen Fall - NH947W





Sargassum Gray - NH948W



Cross Sea - NH962W



Calacatta Hadal - NH915W



Sargassum Gray - NH948W



Sargassum Gold - NH949W

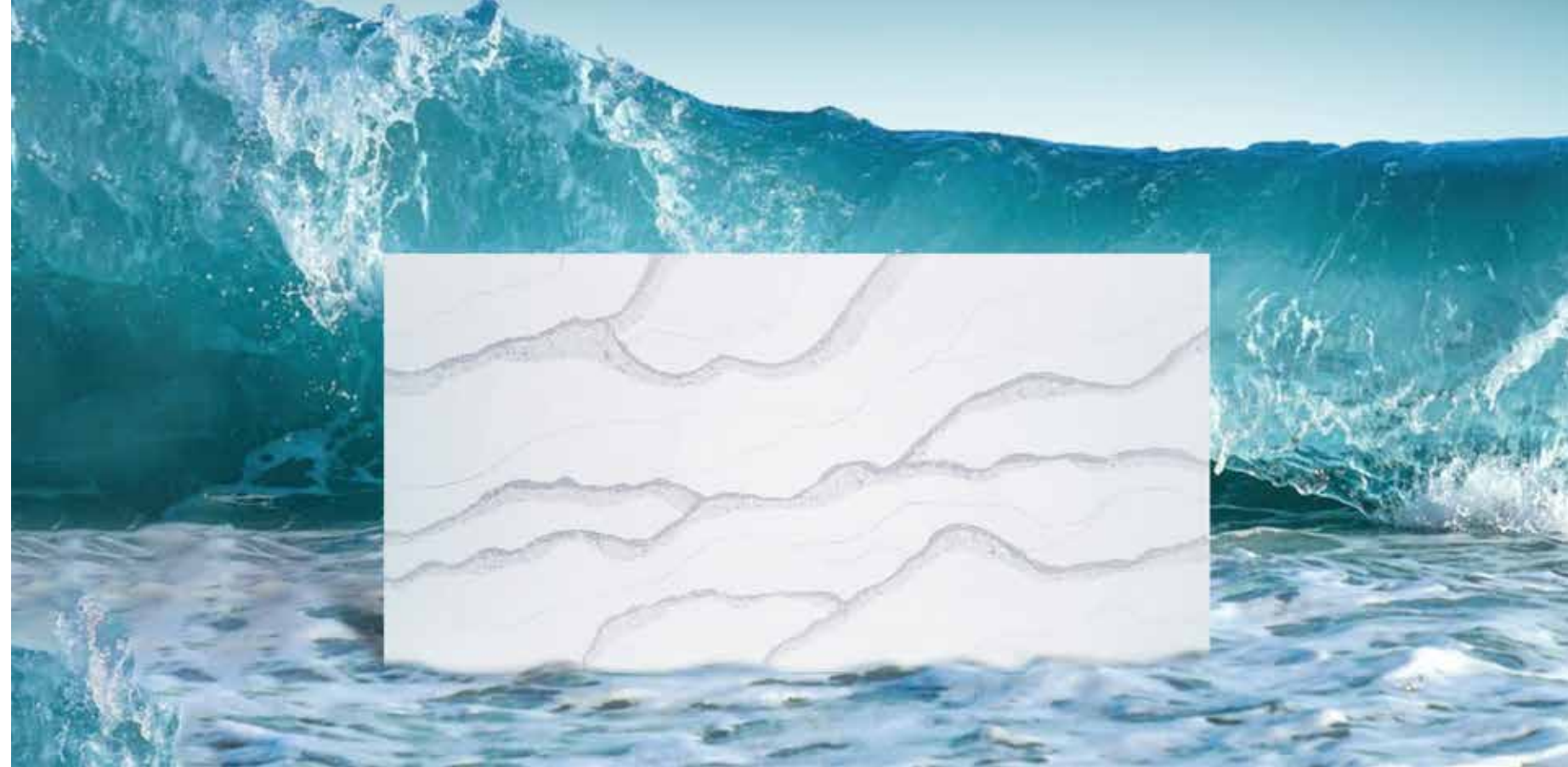
COLLECTION

MYSTERIOUS OCEAN

Dive into the allure of the mysterious ocean with this collection, capturing its enchanting beauty and myriad colors. Experience the quiet and mysterious, yet extremely intense atmosphere of “Hadal” - inspired by the ocean’s profound depths. Transition seamlessly to the vibrant, colorful splendor of Sargassum seaweed (NH948, NH949) embracing coral reefs. Open your eyes to the extraordinary “Cross Sea” waves, a unique dance shaped by the interplay of currents, tides, wind patterns, and the intricate ocean floor configuration.



Cross Sea - NH962W



Calacatta Hadal - NH915W





Sargassum Gray - NH948W



Sargassum Gold - NH949W



Calacatta River - NH9068W



Calacatta Lightning - NH9031W



Infiniti Gold - NH8022W



Golden Statin - NH9025W



Calacatta Medusa - NH9022W



Nebula Lux - NH9026W



Calacatta Laza - NH8097W



Calacatta Olympus - NH9030W



Grey Poseidon - NH9082W



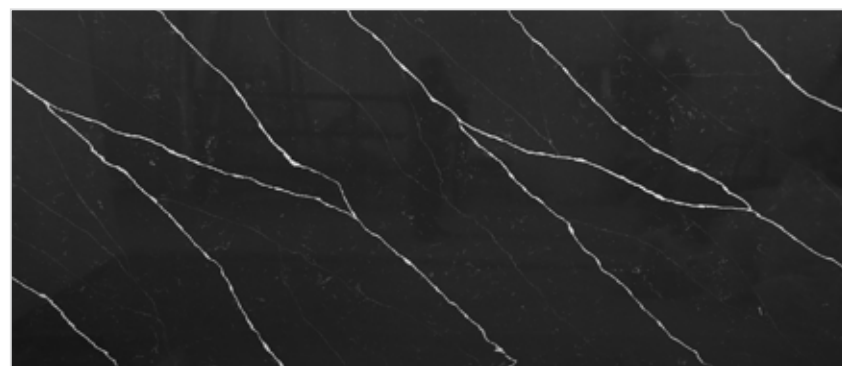
Calacatta Rainbow - NH8098W - O



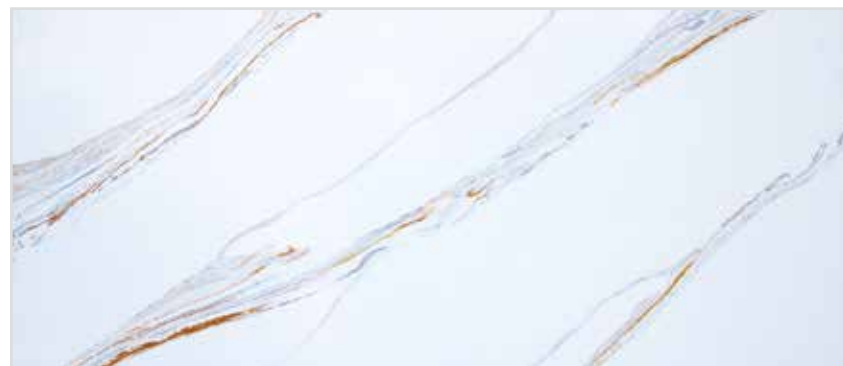
Calacatta Leo - NH9020W



Black Marquina - NH8240



Golden Poseidon - NH9080W



Calacatta Miracle - NH8098W - N



Calacatta Nebula - NH8086W



Gold Medusa - NH9023W



Calacatta Fantasy - NH8081W - A



Calacatta Infiniti - NH8099W



Calacatta Black - NH8027W



Soul Nebula - NH8026W



Calacatta Atlantic - NH9050



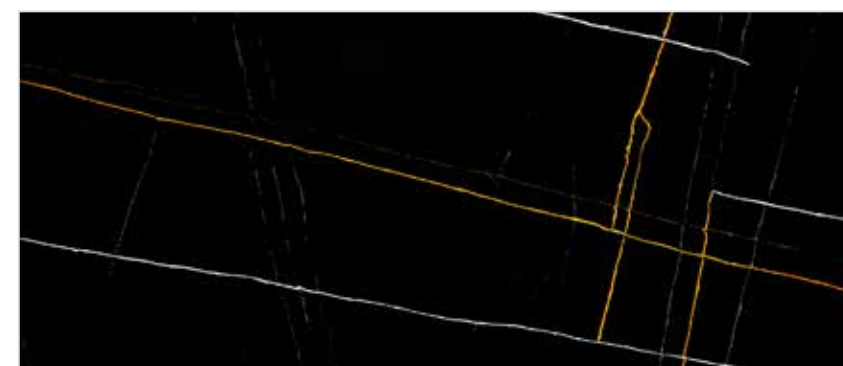
Misterio - NH8067W



Matrix Gold - NH8024W



Black Thunder - NH8220





CARRARA

COLLECTION

Designs that broaden your horizons. Products that open up new possibilities. Our Carrara colors open doors to new possibilities and inspire greatness.

Bianco Carrara - 8004W

Bianco Carrara - NH8004W



Nouvo Carrara - NH8003W



Elegance Grey - NH8101



Montana Grey - NH8121



Moon Cream - NH8401



Carrara Haida - NH8008





St Abigail - 9002

Tropical Wave Close - NH8070



St Abigail - NH9002



Boletus - NH8499



Sping Valley - NH8060



Carrara Magdalena - NH9011



Marfil - NH8426



BASIC

COLLECTION

The Basic series represents happiness and freshness. They are perfect for most houses because of their practicality and the way they blend with most space and ability to hide stains and spills.



Super White - NH1000W



Pure White - NH1003



Pepper Salt - NH2423



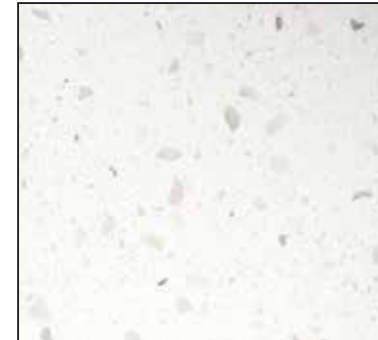
Diamond White - NH2031



Galaxy White - NH2039



Ice White - NH2050



Oceana - NH2054



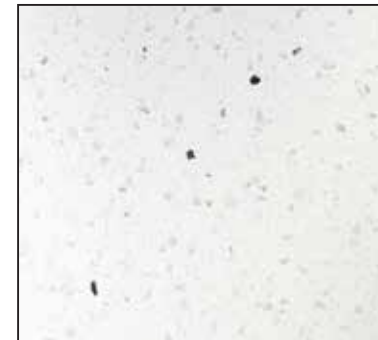
Ocean White - NH2040



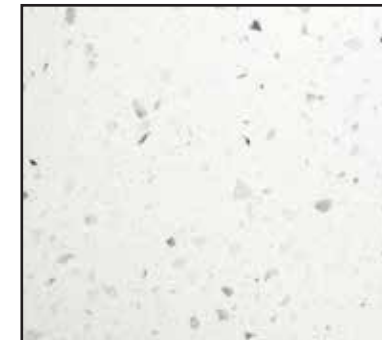
Nougat White - NH2033



Glitter White - NH2066



Crystal White - NH2047



Platinum White - NH2036



Polar White - NH2029



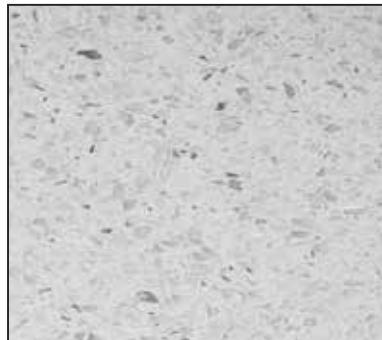
Glacier Shimmer - NH2045



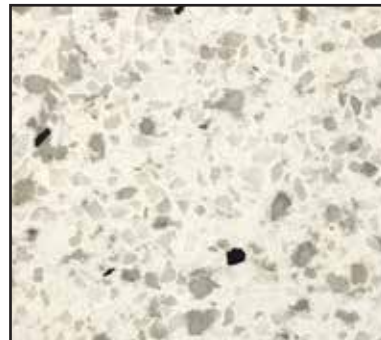
Gobi - NH2120



Platinum Grey - NH2144



Winterport - NH6321



Pasha Beige - NH2123C



Pasha Beige - NH2123



Cemento - NH2160



Concrete - NH2121C



Dawn Grey - NH2148



Rockaway - NH2146



Hillock - NH6503



Toasted Almond - NH6322



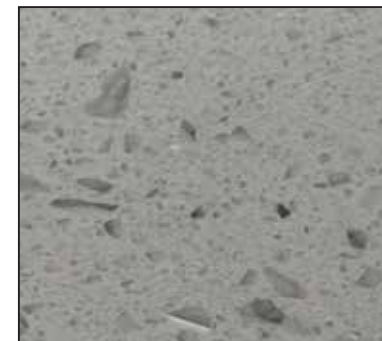
Grey Salt - NH6323



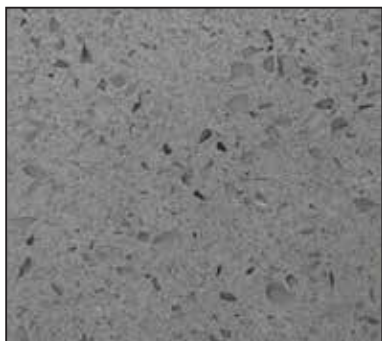
Grey Ice - NH2190



Sliver Grey - NH2147



Iron Grey - NH2149



Steel Grey - NH2143



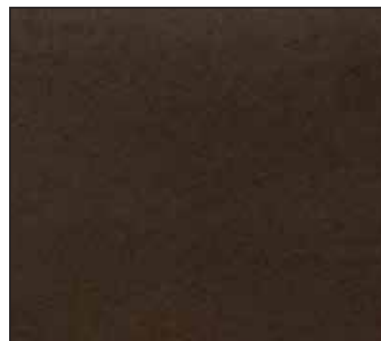
Caligo Grey - NH2151



Deep Grey - NH5203

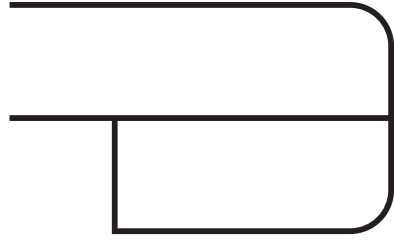

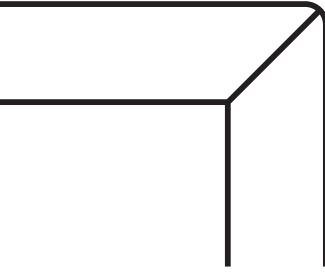

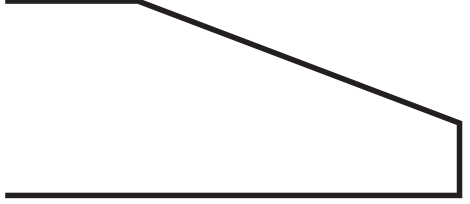






Coffee Bean - NH1104



Crystal Black - NH2207



Stone Edge Profile		
		
40mm Pencil Round	20mm Pencil Round	Mitered
		
1/4 Bevel	Arrised	Ogee
		
Shark nose	Full Bullnose	Half Bullnose

TECHNICAL REPORT



Clause	Test items	Test methods	Test results
1	Water absorption	EN 14617-1:2005	0.01% Classification: W ₄
	Apparent density		2340kg/m ³
2	Flexural strength in natural condition	EN 14617-2:2008	44.2MPa Classification: F ₄
3	Thermal shock resistance	EN 14617-6:2012	Mass loss:0.04% Flexural strength after thermal shock:10.6MPa Flexural strength loss: 76.0%
4	Impact resistance	EN 14617-9:2005	2.40J
5	Chemical resistance	EN 14617-10:2012	Classification: C ₄
6	Dimensions, geometric characteristics and surface quality	EN 14617-16:2005	Tolerance: see clause 6 Surface quality: No defects
7	Abrasion resistance	EN 14617-4:2012 Agglomerated stone - Test methods - Part 4	21.6mm
8	Dimensional stability	EN 14617-12:2012	Class: A Vertical displacement: 0.01mm
9	Slip resistance	EN 14231:2003	Dry: 47 Wet: 7
10	Linear thermal expansion coefficient	EN 14617-11:2005 Agglomerated stone - Test methods - Part 11	31.7×10 ⁻⁶ /°C



A MEMBER OF NHAT HUY GROUP

Head Office: 8th fl, Han Viet Tower, No. 203, Minh Khai Str.,
Ha Noi, Viet Nam

Factory: Area A, Road N2, Tho Loc Industrial Park, Dien Loc
Commune, Dien Chau District, Nghe An Province, Vietnam.

Website: <https://dragonquartz.com.vn/>

Email: info@dragonquartz.com.vn

Phone: (+84) 90 226 73 98